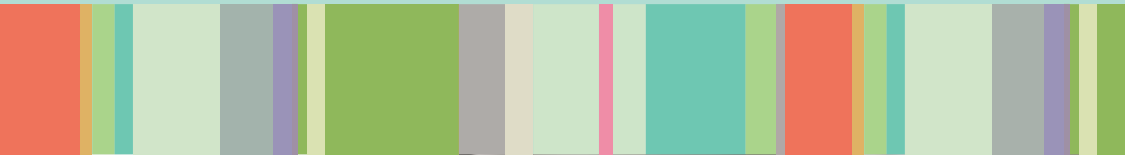


VAILĀKAUTUI E TAKUA KO TE
BCG

**KIKILAGA E NĀ MĀTUA KĀFAI E
UMA TE FAI O TE TUI PUIPUIA**

TE KIKILAGA LELEI O TE MEA NA FAI KI EI TE TUI PUIPUIA KO TE BCG

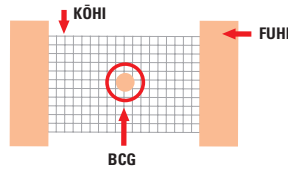


Nā mea e ono kitea kāfai e maua e tau pepe te vailākautui ko te BCG

I loto o te 1-6 vaiaho, e ono kitea he tamā mea kua puta kukula i te mea na fai ki ei te tui. E ono oi toe lelei i loto o he lua vaiaho.

Teka te 6-12 vaiaho, ko te tamā mea na puta e ono kua he tamā pou e vaia. Kāfai e tupu he mea vēnei, tatao i he kōhi (mea fai fūhiga) ke hao te ea ki loto. **Nahe fakapipikia i he mea fakapipiki.**

E ono kātoa te 3 māhina e mate ai te pou, ma e ono o i ei he tamā māila. Ko he mea māhani lava tēnei.



Te kikilaga lelei o te mea na fai ki ei te tui puipuia

- Ke mamā lelei ma mātūtū te mea na fai ki ei te tui.
- Kāfai e tupu he pou, tatao i he kōhi ke hao te ea ki loto.



Nahe **titināgia pe vavalu** te mea na fai ki ei te tui.



Nahe **fakapipikia** i he mea fakapipiki.



Nahe **ukua i he gako, lolo, pe i ni herbs** te mea na fai ki ei te tui.



Nahe **milimilia pe fōfo** te mea na fai ki ei te tui.

Kāfai e i ei he mea e popole ai koe pe fofou koe ki ni fakamatalaga e uiga ki te TB pe ko te vailākautui ko te BCG, fakamolemole fakafehokotaki te Teine Fomai o te Ola Mālōlō (Public Health Nurse) o koe.

Igoa o te Teine Fomai o te Ola Mālōlō: _____

Telefoni: _____

Mo ni iētahi fakamatalaga pe ni popolega o koe i tua o nā taimi faigāluega fakamolemole telefoni ki te Healthline i te 0800 611 116.